

# InteliVision 17Touch

17" TOUCHSCREEN DISPLAY UNIT



## Description

The new InteliVision 17Touch is a seventeen-inch touchscreen display unit for use with the range of ComAp gen-set and generator controllers. It features an extended operating temperature range and UL certification for use in complex installations. Optimized for ease of use, installation and configuration, the InteliVision 17Touch allows the monitoring and control of multiple controllers from a single screen, with the option of directly controlling gen-sets or breakers.

The InteliVision 17Touch comes with SCADA software enabling users to freely configure the screen with different on-screen components, such as meters, graphs, control buttons and many more. The software also enables users to check the history of multiple controllers and change setpoints from one screen. There is also IGS-LOG software preinstalled and it is FREE of charge.

The InteliVision 17Touch is designed to mount into a panel in a power distribution centre or mount onto a wall using the VESA standard mount (optional). Communication is available via standard interfaces such as RS232, Ethernet and USB.

## Benefits

- ▶ UL Certification
- ▶ Extended temperature range (from -20 °C up to 60 °C)
- ▶ Front panel protection to IP65 NEMA4 standard
- ▶ Robust, industrial design with passive cooling
- ▶ LED Backlit, high resolution screen
- ▶ Two easy access USB ports
- ▶ Over and under voltage protection
- ▶ Complimentary IGS-LOG included
- ▶ Monitor and control any connected ComAp controller
- ▶ Monitor and Control all GCBs and MCBs
- ▶ Change set-points from one screen
- ▶ View history logs from all connected controllers
- ▶ Full-screen, and configuration modes
- ▶ Screen can be locked with a PIN

## Order code

Product	Order code
InteliVision 17Touch	IV17T2



ComAp is a member of AMPS (The Association of Manufacturers of Power generating Systems).



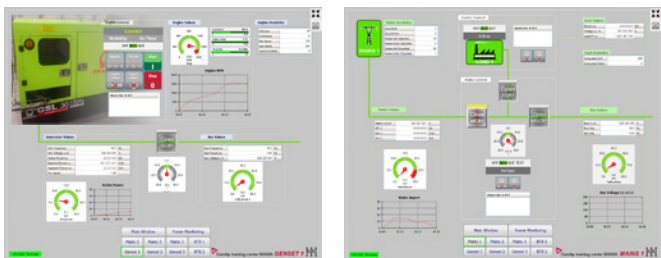
ComAp products meet the highest standards, with every stage of production undertaken in accordance with the ISO certification obtained in 1998.



## Typical application

### Multiple Gen-sets / Controllers in one location

- ▶ Connection via I-LB+, via InternetBridge-NT or directly using RS-232 or Ethernet (depends on system installation)
- ▶ Status of multiple gen-sets and mains controllers is displayed on one screen
- ▶ Multiple detailed screens available



### CHP applications

- ▶ Connection via I-LB+, via InternetBridge-NT or directly using RS-232, Ethernet or USB (depends on type of controller)
- ▶ Status of complete CHP installation displayed on one screen
- ▶ Multiple detailed screens available

## Specification

### System

- ▶ Processor: Onboard Intel® Celeron® 827E, 1.4 GHz
- ▶ Memory: DDR3 SODIMM 4GB
- ▶ LCD/CRT Controller: Integrated in Intel QM67
- ▶ Ethernet: 10/100/1000Base-TX, 2 x RJ-45
- ▶ I/O Port: 4 x RS-232, 6 x USB2.0, VGA, Line-in/out
- ▶ Storage Disk Drive: 16GB SSD industrial

### Mechanical

- ▶ Construction: IP-65/NEMA4 (front)
- ▶ Mounting: Panel/VESA100/Rack/Wall
- ▶ Dimension: 420 mm x 358 mm x 97 mm
- ▶ Cut-Out: 405 mm x 339 mm
- ▶ Gross/Net Weight: 10.5 kg / 8.1 kg

### Power Supply

- ▶ DC Input: 9–30 V DC, w/3-pin terminal block, over/under voltage protection, polarity protection
- ▶ Consumption on 24 V: 35 W (Idle), 41 W (High)



MANUFACTURER:

**ComAp a.s.**

Czech Republic

Phone: + 420 246 012 111

Fax: + 420 266 316 647

E-mail: [info@comap.cz](mailto:info@comap.cz)

Internet: [www.comap.cz](http://www.comap.cz)



## Environmental

- ▶ Operating temp.: -20 up to 60 °C
- ▶ Storage temp.: -20 up to 70 °C
- ▶ Storage humidity: 10–95% at 40 °C (non condensing)
- ▶ Vibration: 3g rms / 5–500 Hz
- ▶ Shock: 15G peak acceleration (11 ms duration)
- ▶ EMC: CE / FCC-A

## LCD

- ▶ Display type: 17" TFT-LCD
- ▶ Max. Resolution: 1280 x 1024
- ▶ Max. Colors: 16.7M colors
- ▶ Luminance: 350 cd/m<sup>3</sup>
- ▶ Viewing Angle: 170° (H) / 160° (V)
- ▶ Backlight / MTBF – LED / 50000

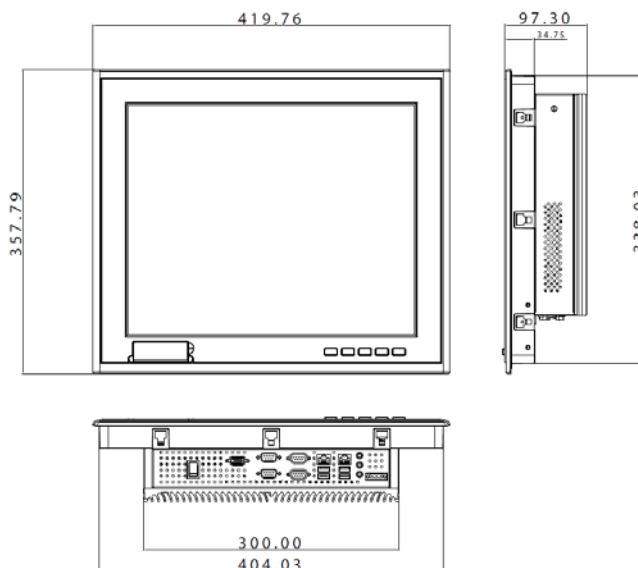
## Touchscreen

- ▶ Type: 5-wire resistive
- ▶ Light Transmission: 80%
- ▶ Lifetime: 35 Million activations

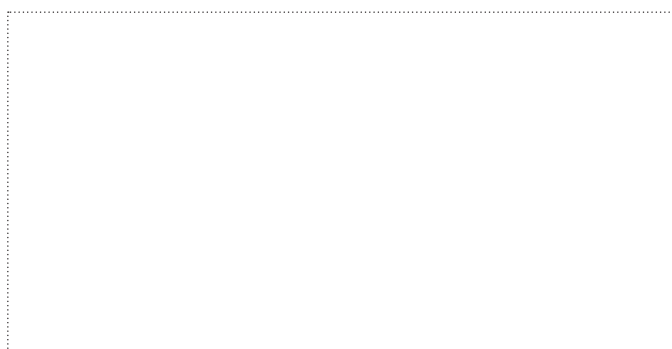
## Software

- ▶ OS: Windows Embedded Standard 7
- ▶ ComAp: IntelliMonitor, IGS-LOG

## Dimensions



LOCAL DISTRIBUTOR / PARTNER:



**Customer satisfaction is our mission. We continuously develop our people to be the best to succeed in our mission.**