

Automatic mains failure (AMF) gen-set controllers



RGK 600 - RGK 601 - RGK 610



RGK 700 - RGK 800

Order code	Description	Qty per pkg	Wt [kg]
RGK 600	12/24VDC, graphic LCD display, w/Pick-up speed input, 4 inputs, 6 outputs	1	0.540
RGK 601	12/24VDC, graphic LCD display, CANbus port, 4 inputs, 6 outputs	1	0.540
RGK 610	12/24VDC, graphic LCD display, w/Pick-up speed input, 4 inputs, 6 outputs, expandable with EXP... modules	1	0.600
RGK 700	12/24VDC, graphic LCD display, RS232 serial port, CANbus port, 6 inputs, 7 outputs	1	0.880
RGK 800	12/24VDC, graphic LCD display, RS485 serial port, CANbus port, 8 inputs, 10 outputs, expandable with EXP... modules,	1	0.960

Programmable functions and properties

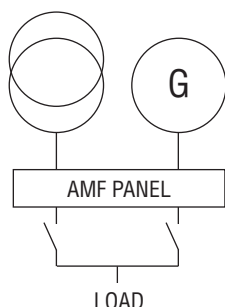
Characteristic	RGK 600 RGK 601 RGK 610	RGK 700	RGK 800
Inputs	4	6	8
Relay outputs	-	3	3
Protected static outputs	6	4	7
Resistive/Digital inputs	3	3	4

Order code	Description
ACCESSORY FOR RGK 600, RGK 601 AND RGK 610	
EXP80 01	IP65 housing gasket
EXPANSION MODULES FOR RGK 610 AND RGK 800 Communications interfaces.	
EXP10 10	Opto-isolated USB interface
EXP10 11	Opto-isolated RS232 interface
EXP10 12	Opto-isolated RS485 interface
EXPANSION MODULES FOR RGK 800 Inputs and outputs.	
EXP10 00	4 opto-isolated digital inputs
EXP10 01	4 opto-isolated static outputs
EXP10 02	2 digital inputs and 2 static outputs, opto-isolated
EXP10 03	2 relay outputs rated 5A 250VAC
EXP10 04	2 opto-isolated analog inputs 0/4-20mA or PT100 or 0-10V or 0...±5V
EXP10 05	2 opto-isolated analog outputs 0/4-20mA or 0-10V or 0...±5V
EXP10 08	2 opto-isolated digital inputs and 2 relay outputs rated 5A 250VAC
EXP10 40	2 digital/resistive inputs, 2 static outputs
EXP10 41	2 thermocouple inputs, 2 static outputs
Communications interfaces.	
EXP10 13	Ethernet interface with Web server function
EXP10 15	GPRS/GSM modem



EXP 10...

AMF (AUTOMATIC MAINS FAILURE) APPLICATION



General characteristics for

RGK 600 - RGK 601 - RGK 610 - RGK 700 - RGK 800

- Power supply: 7...33VDC
- VAC inputs: Mains and generator L1-L2-L3-N
- Voltage control for one, two and three phase systems with or without neutral
- Rated measurement voltage:
 - 480VAC for RGK 600, RGK 601 and RGK 610
 - 600VAC for RGK 700 and RGK 800
- Rated measurement voltage range:
 - 100...480VAC for RGK 600, RGK 601 and RGK 610
 - 30...600VAC for RGK 700 and RGK 800
- Frequency measurement range: 45-65Hz
- Programmable VT ratio
- Current measurement range (3 PH): 0.050...6A or 0.050...1.2A
- Graphic LCD: 128x80 pixels with backlight
- 1 USB/optical and Wi-Fi port on front for programming
- Engine running detection: "D+", generator voltage and frequency
- Engine speed inputs: "W" or Magnetic "Pick-up" (RGK 601 excluded)
- 1 CANbus-J1939 port (RGK 600 and RGK 610 excluded)
- 3 analog ohmic inputs for oil pressure, engine temperature and fuel level control
- 1 built-in alarm remote port
- Non-volatile memory for event storage
- Alarm, event and parameter text in 5 languages
- Alarm text customisable (8 alarms)
- Event log
- Modbus-RTU and Modbus-ASCII communication protocols (RGK 600 and RGK 601 excluded)
- Compatible with Synergy and Xpress software
- 1 slot for EXP module (EXP10 10, EXP10 11, EXP10 12) for RGK 610
- 3 slots for EXP modules for RGK 800.

For RGK 700 - RGK 800 only

- PLC logic for inputs, outputs and internal status
- 1 communication port: RS232 for RGK 700; RS485 for RGK 800
- Degree of protection: IEC IP65 on front; suitable for use with UL/CSA Type 4X outdoor enclosure installation.

For RGK 800 only

- Neutral current measurement range: 0.050...6A or 0.050...1.2A
- 400Hz frequency support
- 1 programmable analog input
- Modbus-TCP communication protocol
- Current leakage control towards earth/ground
- Clock-calendar (RTC).

Certifications and compliance

Certifications obtained: UL Listed, for USA and Canada (cULus - File E93601), as Auxiliary Devices - Generator controllers except pending for RGK 610; EAC. Compliant with standards: IEC/EN 61010-1, IEC/EN 61000-6-2, IEC/EN 61000-6-3, UL 508, CSA C22.2 n° 14.